

WRAP SLEEVES

WRAP SLEEVES

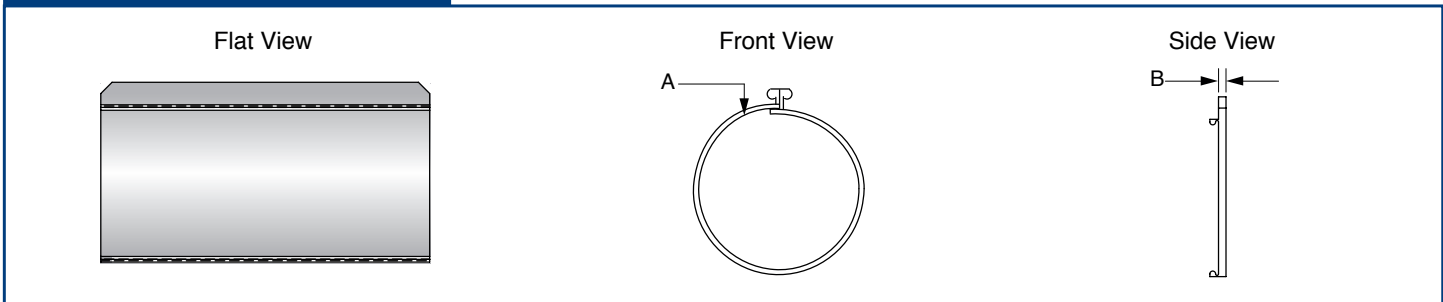


Super Seal Low Voltage adhesive lined tubing is available in both medium and heavy wall sizes. Medium wall tubes (series GMW) are used for environmental protection of low voltage cable terminations and insulating connectors for low voltage straight through joints, splices and jacket repairs up to 1.1KV. Heavy wall tubes (series GHW) are used for mechanical protection and outer sealing of underground straight through cable joints, splices and jacket repairs up to 36KV. They both have excellent resistance to weathering, UV rays, chemicals and solvents and conform to the IEC 60684-3-247 standard and are available in multiple lengths and diameters from 1/2" up to 7.8"

TECHNICAL SPECIFICATIONS

| PROPERTIES | VALUE | STANDARD |
|--|-----------------------------------|------------|
| MECHANICAL | | |
| Tensile Strength (Min) | 17 Mpa (2465 psi) | ASTM D638 |
| Ultimate Elongation (Min) | 300% | ASTM D638 |
| Water Absorption (Max) | 0.20% | ASTM D570 |
| ESCR 48 hrs. for 50°C/122°F | No Crack | ASTM D570 |
| Torchability | No Split | TE 201 AOL |
| THERMAL | | |
| Accelerated Ageing (500 Hrs) | 120°C (248°F) | ASTM D2671 |
| Tensile Strength (Min) | 15 Mpa (2175 psi) | ASTM D638 |
| Ultimate Elongation (Min) | 220% | ASTM D638 |
| Heat Shock 250°C (482°F) for 30 Min. | No Cracking or Flowing | ESI 09-11 |
| Shrink Temperature | 125°C (257°F) | IEC 216 |
| Continuous Temperature Limit | -40°C to +100°C (-40°F to +212°F) | IEC 216 |
| ELECTRICAL | | |
| Dielectric Strength (Min) | 12 KV/mm. (304.8 KV/in) | ASTM D149 |
| CHEMICAL | | |
| Chemical resistance in 0.1 N sol.of Na ₂ ,So ₄ ,Na ₂ ,Nacl ₂ ,H ₂ so ₄ | No Cracking | ASTM D2671 |
| Tensile Strength Test | 15 MPa (2175 psi) | ASTM D638 |
| Elongation Test | 200% | ASTM D638 |

DIMENSIONAL DATA



FEATURES

- The wrap sleeves are made from same thermally stabilized, cross linked polymeric material as cable our end caps and low voltage tubing.
- High Shrink ratio covers irregular shapes.
- Hot melt adhesive provides complete environmental sealing and insulation.
- Quickly recovers for cost efficient repairs

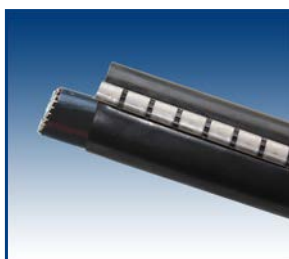
WRAP AROUND SLEEVE SELECTION CHART

| Super Seal Part # | Inside Diameter "A" | | | | Wall Thickness "B" | | Cable Range | | |
|-------------------|---------------------|----------|-----------|----------|---------------------|----------|-------------|----------|-----------|
| | Supplied | | Recovered | | Recovered (+/- 20%) | | Size | Diameter | |
| | (mm) | (inches) | (mm) | (inches) | (mm) | (inches) | AWG KCML | (mm) | (inches) |
| GWS 55/12 | 55 | 2.17 | 8 | 0.31 | 2.7 | 0.11 | 300-500 | 15-50 | 0.59-1.96 |
| GWS 76/18 | 76 | 2.99 | 18 | 0.71 | 2.7 | 0.11 | 600-1250 | 20-70 | 0.78-2.75 |
| GWS 105/28 | 105 | 4.13 | 28 | 1.1 | 2.7 | 0.11 | 800-1250 | 30-100 | 1.18-3.93 |
| GWS 140/35 | 140 | 5.51 | 35 | 1.38 | 2.7 | 0.11 | 1500-2500 | 40-135 | 1.57-5.31 |
| GWS 190/46 | 190 | 7.48 | 46 | 1.81 | 2.7 | 0.11 | | 50-185 | 1.96-7.28 |
| GWS 200/50 | 240 | 9.45 | 50 | 1.97 | 2.7 | 0.11 | | 55-195 | 2.16-7.67 |

APPLICATION METHOD

The wire/cable shall be thoroughly cleaned prior to placing properly sized wrap sleeve over cable. Evenly apply heat from heat gun or propane torch. Begin to shrink one end of the wrap sleeve first and continue to apply heat to the sleeve by moving towards the opposite open end. Apply heat until the entire sleeve is firmly fitted to the cable. Sealant will flow from the open ends. Allow sleeve to cool.

Before



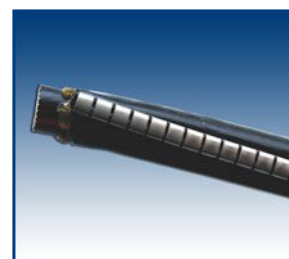
Prepare cable and select the appropriate size sleeve

During



Place wrap sleeve over cable end and apply heat

After



Wrap sleeve shrinks creating a durable and protective seal